

Sizing Up the Garage

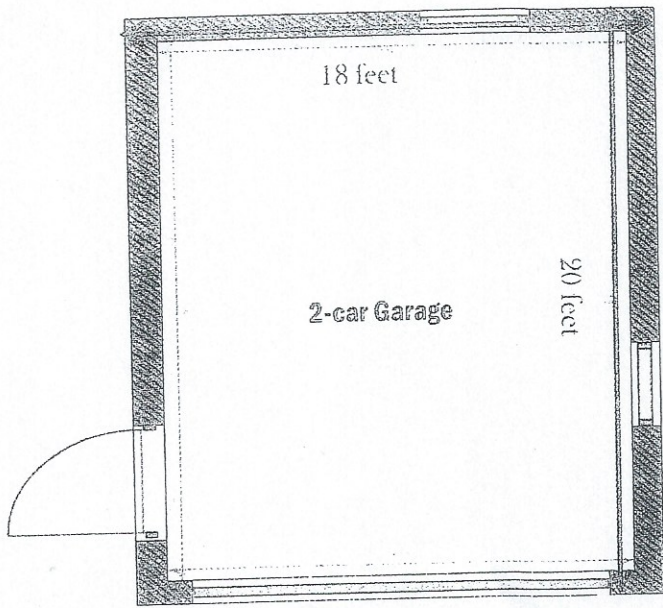
Activity

Determine if two full-scale versions of your car would appropriately fit into an 18' x 20' garage.

1. Measure your car. Round your answers to the nearest tenth of an inch.

a) Length _____ inches

b) Width _____ inches



2. Using the Hot Wheels® standard scale factor of 1:64, what are the actual measurements of your car? Be sure to show all of your work below to explain how you found your answer. Round your answers to the nearest tenth of a foot.

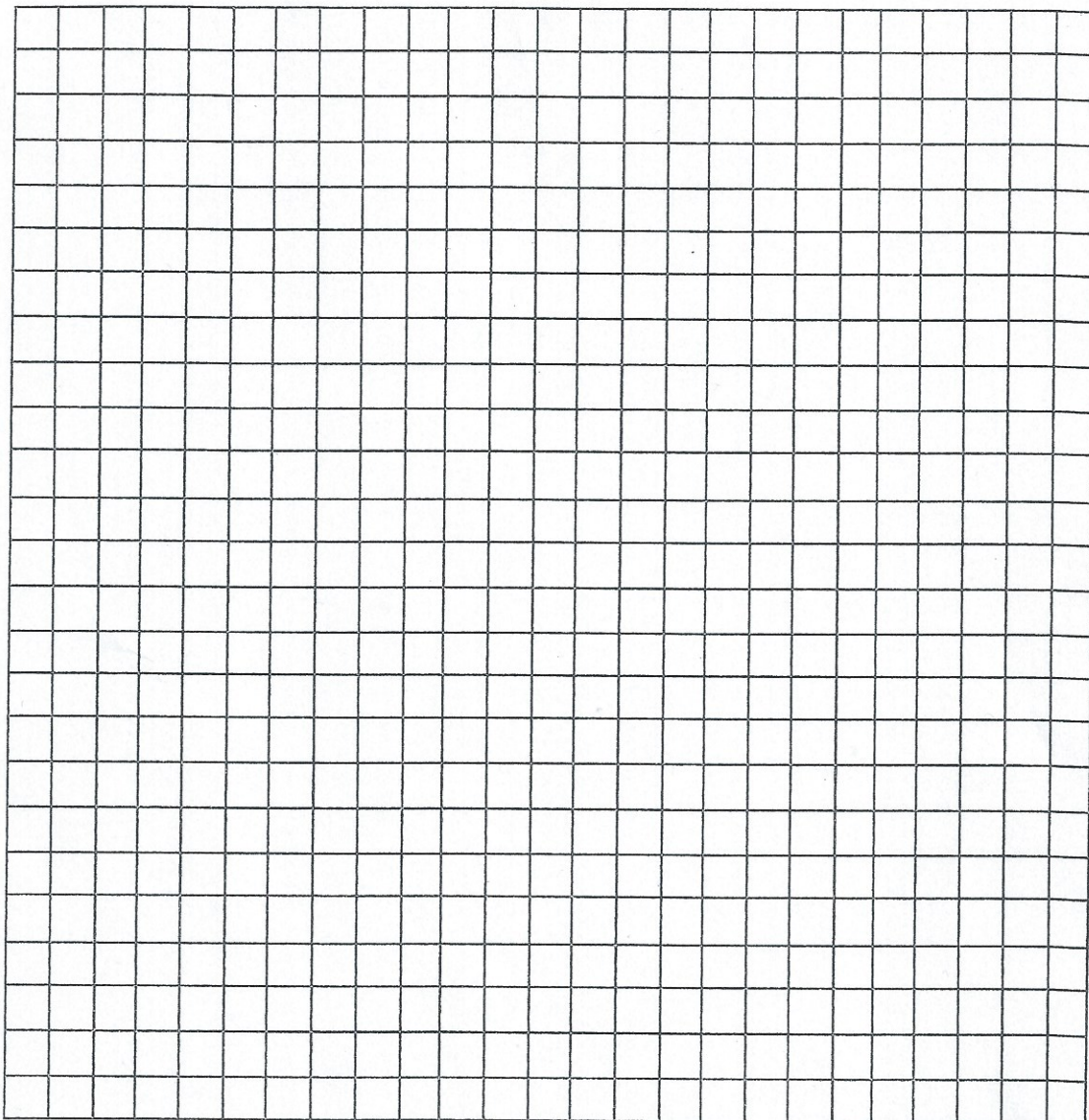
- Is rounding to nearest tenth consistent with using customary measure?

a) Length _____ feet

b) Width _____ feet

- c) Will the full size version of your car fit appropriately in the 18' X 20' garage? Briefly explain how you know.

3. Draw the floor plan of a two-car garage in which two of your cars would fit appropriately.



4. Write a note to the general contractor who will build the garage from your floor plan explaining how you know two of your cars will fit.